

Build It Better With



Post-Frame Buildings

Alexandria - Glenwood - Parkers Prairie - Brandon

www.hilltoplbr.com

You can depend on Hilltop Lumber for a functional and structurally sound post-frame building, at a competitive price.

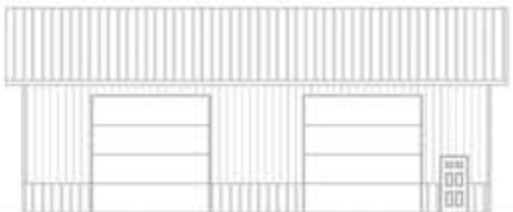
Our team has over 30 years of experience. Whether your building needs are basic or more elaborate, our talented designers will help you get exactly what you want.

There is a difference in post-frame buildings. Bring in your ideas to the Hilltop Lumber location near you and let's talk. You'll be glad you did!

CUSTOM DESIGNED FOR YOUR NEEDS
QUALITY CONSTRUCTION THROUGHOUT
COMPETITIVE PACKAGE PRICING
30 YEARS EXPERIENCE



Hilltop's talented draftsmen custom design your building to be structurally sound and functional.



FRONT ELEVATION
1/4" = 1'-0"

**Residential - Agricultural
Commercial**



Whether your building is basic or more elaborate, you'll like our competitive prices and excellent service.

Metal Roofing Panels

Structural Standing Seam Panels

Structural Standing Seam Panels have side laps between the metal roofing panels that are arranged in a vertical position above the roof line. The metal roof panel system is secured to the roof substructure by means of concealed hold down clips attached with screws to the substructure, except that through fasteners may be used at limited locations such as at the ends of panels and at roof penetrations.

Architectural Panels

Architectural Panels has a primary purpose of aesthetic enhancement of a building or structure. They are installed over solid substrates at a slope greater than or equal to 3:12. Most panels have details that are designed to conceal the fasteners so that your metal roof will have a clean appearance.

Metal Wall Panels

Complementing your Metal Roof with Metal Wall Panels guarantees you'll have quality from the ground up.

Metal Sales has developed a complete line of the most popular metal wall panel styles and materials that can protect your commercial, industrial or architectural structure better than wood, brick, concrete or vinyl siding.

Our durable metal wall panels also offer tremendous versatility in design. Vertical seams, horizontal lines or dramatic angles can create a stunning visual impact for your building. Popular metal panel styles, including Metal Sales' Span-Line 36A, Verti-Line and Flush-Face Series are available in a variety of colors and finishes. Each features the same maintenance-free, weather and fire resistant qualities of superior metal fabrication. Let Hilltop Lumber's in-house design experts show you how to completely clad your building in quality products from Metal Sales.

Our product knowledge, excellent customer service and competitive pricing assure you of a metal building that fits your needs and budget.

Metal Soffit Panels

Whether in commercial, industrial or architectural applications, the look of your metal roof should have a consistent, appealing quality. That is why Metal Sales complements each panel color and design with matching Metal Soffit Panels that complete the architectural integrity of your metal roof.

Metal Soffit Panels are designed to cover the underside of eaves, from wall to fascia, with the same style and protective quality as the metal roofing panels above.

To complete the look, Metal Sales offers a variety of flashings and accessory products to complement your metal roof panels. Metal Soffit Panels are designed to be utilized over open structural framing, but can easily be used with a solid substrate.

For solid substrate applications, the recommended substrate is 5/8" plywood with a 30 pound felt moisture barrier. To avoid panel distortion, use a properly aligned and uniform substructure.

Soffit Panels are available in a 12" width with a 1" rib height. Lengths under 5'-0" are available with some cutting restrictions. Maximum recommended panel length is 20'-0" for 24 gauge flat or striated panels, and 5'-0" for 26 gauge with striations (26 gauge Soffit panel is not to be used for wall applications). Longer panels require additional consideration in packaging, shipping, and erection.

Metal Secondary Framing

Metal Sales offers a complete line of high quality Secondary Framing members, to ensure the structural frame of your building is every bit as strong as your exterior metal panels.

Metal Sales structural sections are manufactured using ASTM A 1011 grade 50, class 2 (55 KSI minimum yield) with a red oxide finish or ASTM A 653 grade 50, class 2 (55 KSI min yield) with a G90 galvanized finish. Cee or Zee shapes with web depths of 4", 6", 8", 9", and 12" in a variety of symmetrical or unsymmetrical flanges. Special shape single or double slope, as well as high-side or low-side eave struts are also available.

- Cee and Zee shapes
- Symmetrical and unsymmetrical flanges
- Red Oxide Finish ASTM A 1011 Grade 50, Class 2 (55 KSI min yield)
- Galvanized Finish ASTM A 653 Grade 50, Class 2 (55 KSI min yield)
- Eave Struts in single or double slope for high side or low side applications
- LGSi Purlins available



Hilltop Lumber Locations

Alexandria: 1405 N Nokomis NE, 320-763-9663
Glenwood: Highway 29 N, 320-634-5386

Parkers Prairie: 210 Soo St. E, 218-338-4171
Brandon: 102 Central S, 320-524-2720

Online at www.hilltoplbr.com